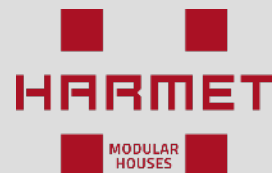






We offer our clients complete solutions - **from idea and design to final assembly of the buildings.**



Short history

- 1992 Started production of metal products
- 1997 Started production of prefabricated modular buildings
- 2008 Started apartment building projects
- 2013 Opened factory in Pärnu (Estonia)
- 2017 Opened of our largest and most modern factory in Kumna (Estonia)



Harmet Group

Production

Construction

Design

Sales/Purchase

HARMET

HCS

**HARMET
METALL**

**HARMET
BATHROOM**

HMB

**THORN
ENGINEERING**

ATH



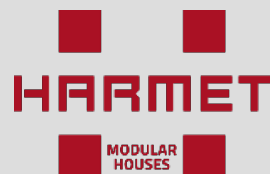


Today Harmet operates in **four factories in Estonia** (Kumna, Pärnu, Tutermaa, Tallinn) and one in **Finland** (Lieksa)

Harmet employs around 750 workers

Office personnel, **in Kumna**, is around 50 people.

Total annual building capacity is over **200,000 m²**



Subsidiary companies

Harmet Modular Building - assembly of buildings

Harmet Construction – construction and assembly buildings

Harmet Metall – production of metal elements and structures

Harmet Bathroom – factory-made production of wet rooms for buildings



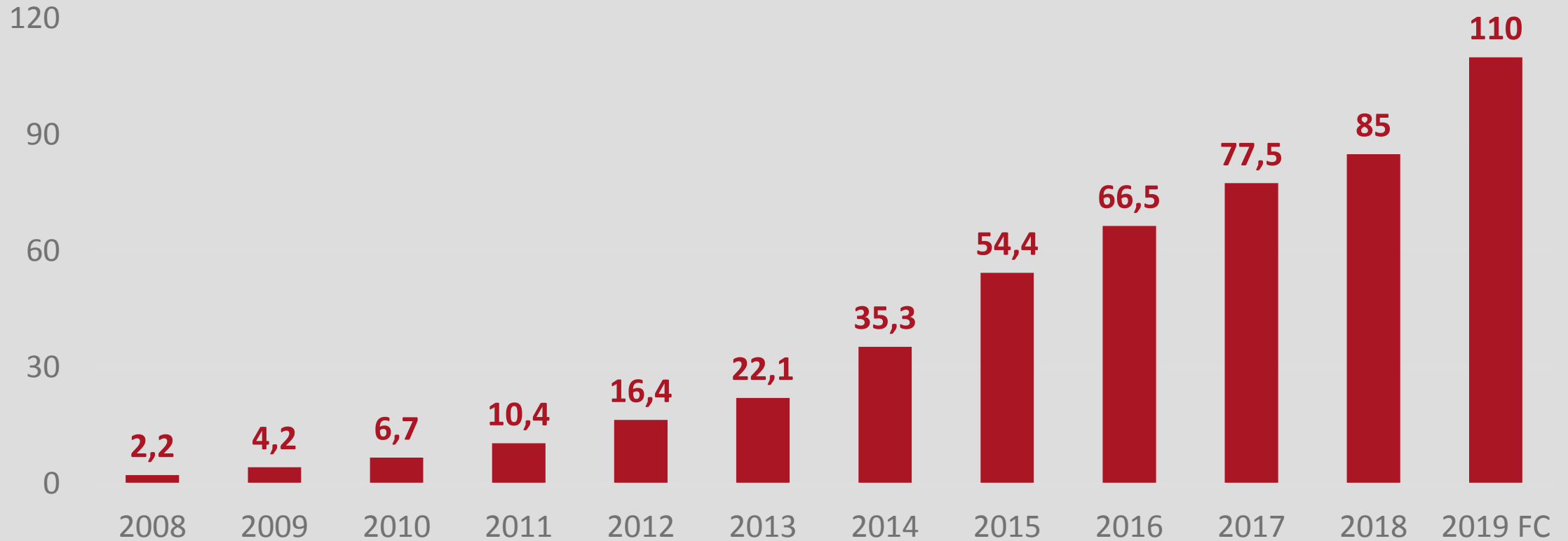
Our markets

Harmet's primary market is Scandinavia as **more than 90% of our production is sold to the Scandinavian countries.**

Over 70% of our production goes to Swedish market with **primary customers** being **Boklok** and **Cramo**.



Turnover of past years and forecast (MEUR)



We produce and provide **pre-fabricated modules**, whereby 90% of the entire building structure and interior is built in a factory.

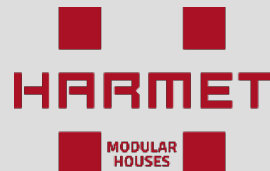


Our pre-fabricated modules are delivered...

- with all doors and windows installed;
- with all interior finishing and most of the exterior finishing already done;
- with complete power, water and sewage systems;
- with all sanitary and bathroom appliances already fitted;
- with a pre-installed ventilation system;
- with pre-installed kitchen cabinets and appliances;
- as per the customer's request, we can also install all furnishings;
- all modules undergo quality control before leaving the factory.

Advantages

- Construction of a modular home is **quick, efficient and affordable**
- Construction of the house **will not be affected by external conditions**
- The **elements** of a modular home **are easy to install, add or remove**
- Optimized production **saves both time and nature**





For optimal transport solutions we produce modules with **width of 4,1 m, length 12 m** and **height of 3,5 m.**

Our products feature **high-quality** construction that ensures a **long service life** and reduces future maintenance costs. Harmet's products come with a **5-year warranty**.



ETA Certificate, Quality and environmental management certificates


Kemistintie 3, Espoo
P.O. Box 1001, FI-02044 VTT, FINLAND
www.vttexpertservices.fi


Designated
according to
Article 19 of
Regulation (EU)
No 305/2011

Member of

www.eta.eu

European Technical Assessment ETA 10/0033 of 5/12/2017

I General Part

Technical Assessment Body issuing the ETA	VTT Expert Services LTD
Trade name of the construction product	Harmet Modular Houses
Product family to which the construction product belongs	Timber building kit
Manufacturer	Harmet OÜ, Puusepa tee 4, Kumna 76614 Harjumaa, Estonia
Manufacturing plants	Puusepa tee 4, Kumna 76614 Harjumaa, Estonia Pärnu Factory, Plaadi 1, EE80043 Pärnu, Estonia
This European Technical Assessment contains	11 pages including 2 Annexes which form an integral part of this assessment. Separate Annexes 2 and 3.
This European Technical Assessment is issued in accordance with regulation (EU) No 305/2011, on the basis of	Guideline for European technical approval of "Timber building kits", ETA/G 007, Edition November 2012, used as European Assessment Document (EAD)
This ETA replaces	ETA 10/0033 issued on 14/10/2016



MANAGEMENT SYSTEM CERTIFICATE

Certificate No: 174009-1815-AC18F-FINAS Initial certification date: 18 May 2015 Valid: 18 May 2015 - 18 May 2021

This is to certify that the management system of

HARMET OÜ
Tule põik 1, Saue, 76505 Harjumaa, Estonia
and the sites as mentioned in the appendix accompanying this certificate

has been found to conform to the Quality Management System standard:

ISO 9001:2008

This certificate is valid for the following scope:

THE DESIGN, PRODUCTION AND ASSEMBLING OF THE MODULAR HOUSES AND SITEHUTS.

Place and date:
Tallinn, 18 May 2015



For the issuing office:
DNV GL Business Assurance Finland Oy Ab
Kalliokatu 5, 02180 Espoo, Finland


Harmet OÜ
Management Representative

Look at full text of conditions as set out in the Certification Agreement may under the Certificate number:
174009-1815-AC18F-FINAS. For more information please visit our homepage: www.dnvgl.com. Tel: +358 10 202 4200. assurance.dnvgl.com



MANAGEMENT SYSTEM CERTIFICATE

Certificate No: 174009-1815-AC18F-FINAS Initial certification date: 18 May 2015 Valid: 18 May 2015 - 18 May 2021

This is to certify that the management system of

HARMET OÜ
Tule põik 1, Saue, 76505 Harjumaa, Estonia
and the sites as mentioned in the appendix accompanying this certificate

has been found to conform to the Environmental Management System standard:

ISO 14001:2004

This certificate is valid for the following scope:

THE DESIGN, PRODUCTION AND ASSEMBLING OF THE MODULAR HOUSES AND SITEHUTS.


Place and date:
Tallinn, 18 May 2015



For the issuing office:
DNV GL Business Assurance Finland Oy Ab
Kalliokatu 5, 02180 Espoo, Finland


Harmet OÜ
Management Representative

Look at full text of conditions as set out in the Certification Agreement may under the Certificate number:
174009-1815-AC18F-FINAS. For more information please visit our homepage: www.dnvgl.com. Tel: +358 10 202 4200. assurance.dnvgl.com



MANAGEMENT SYSTEM CERTIFICATE

Certificate No: 174009-1815-AC18F-FINAS Initial certification date: 18 March 2018 Valid: 18 March 2018 - 18 May 2021

This is to certify that the management system of

HARMET OÜ
Puusepa tee 4, Kumna, 76614 Harjumaa, Estonia
and the sites as mentioned in the appendix accompanying this certificate



has been found to conform to the Occupational Health and Safety Management System standard:


OHSAS 18001:2007

This certificate is valid for the following scope:

THE DESIGN, PRODUCTION AND ASSEMBLING OF THE TIMBER FRAMED MODULAR HOUSES AND SITEHUTS.

Place and date:
Tallinn, 18 March 2018



For the issuing office:
DNV GL Business Assurance Finland Oy Ab
Kalliokatu 5, 02180 Espoo, Finland

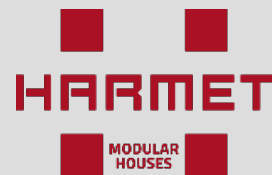

Harmet OÜ
Management Representative

Look at full text of conditions as set out in the Certification Agreement may under the Certificate number:
174009-1815-AC18F-FINAS. For more information please visit our homepage: www.dnvgl.com. Tel: +358 10 202 4200. assurance.dnvgl.com



Sustainability at Harmet

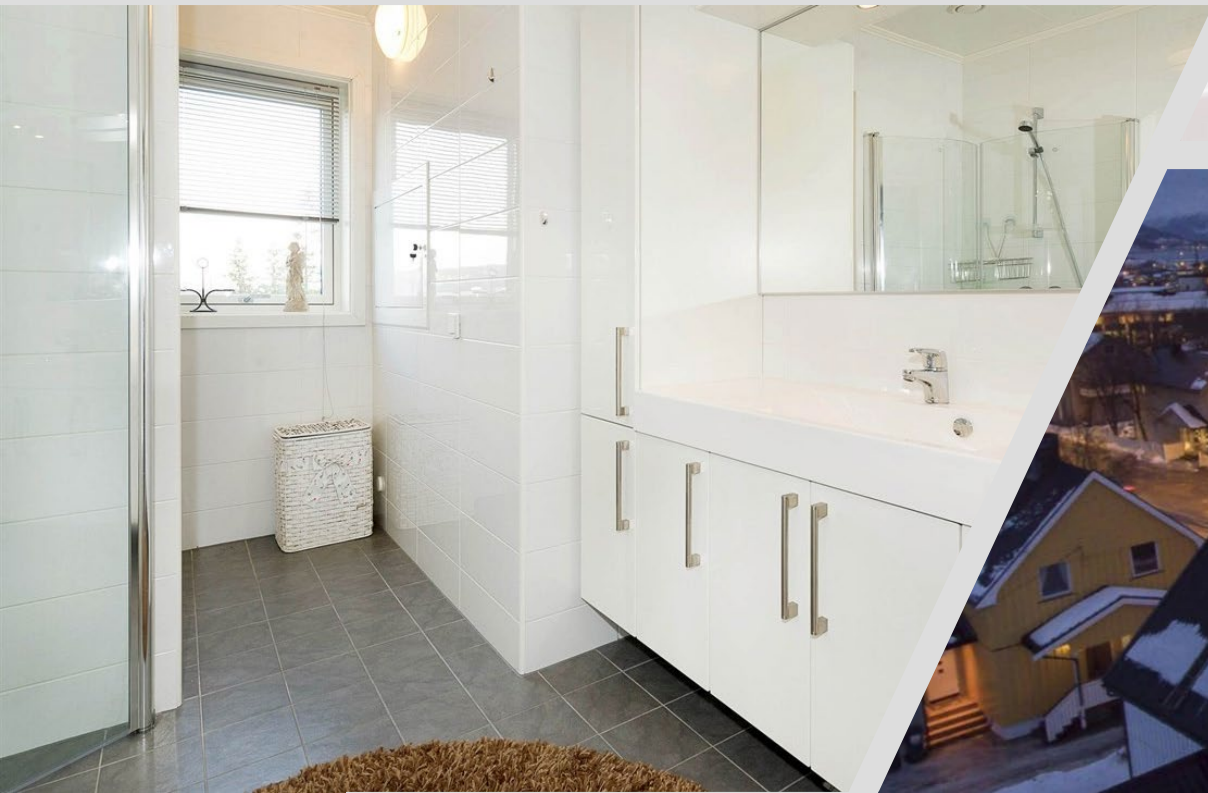
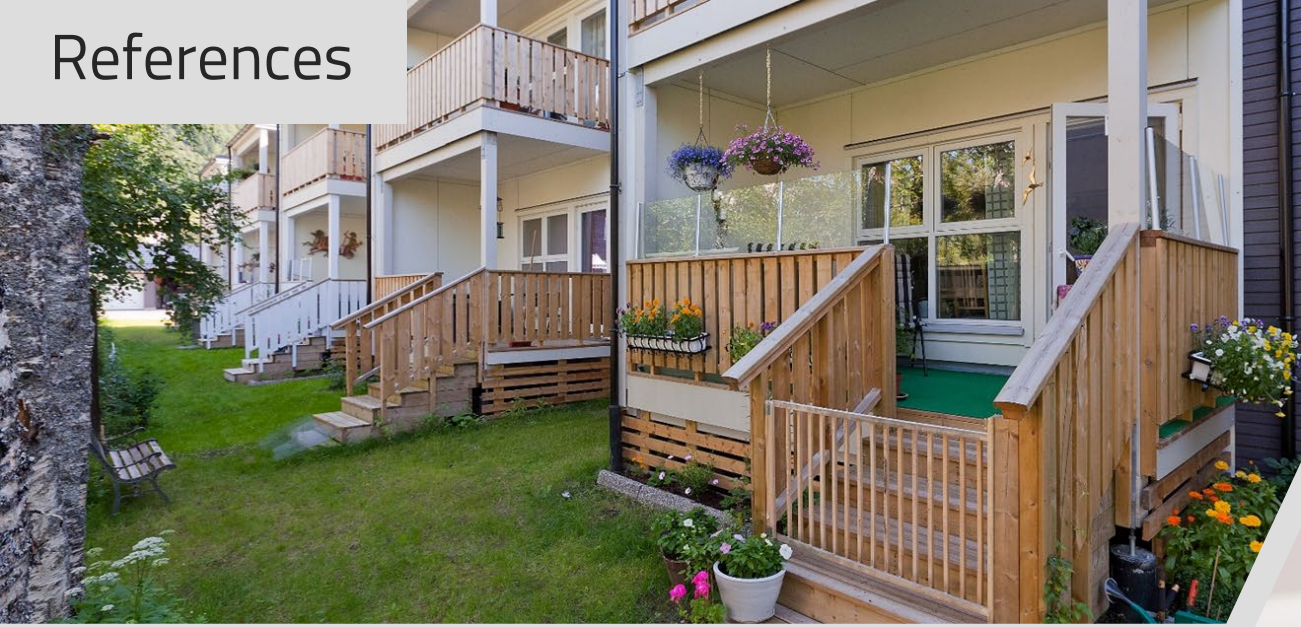
- 250 kW of net power **solar energy used for production**
- In 2018 **25 000 new trees were planted** by Harmet – a yearly Corporate Social Responsibility tradition
- **Paper usage reduction plan**



References



References



References



References





Harmet's modular production began with the manufacture of **temporary side-huts** for rental companies. Our experience of building side-huts is 20 years long.



New Kumna Factory – July 2017

Total production area of 23 000 m²

Total annual production capacity is 3600-6000 modules



Weinmann production lines



Bridge

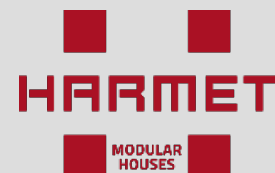


Transport line

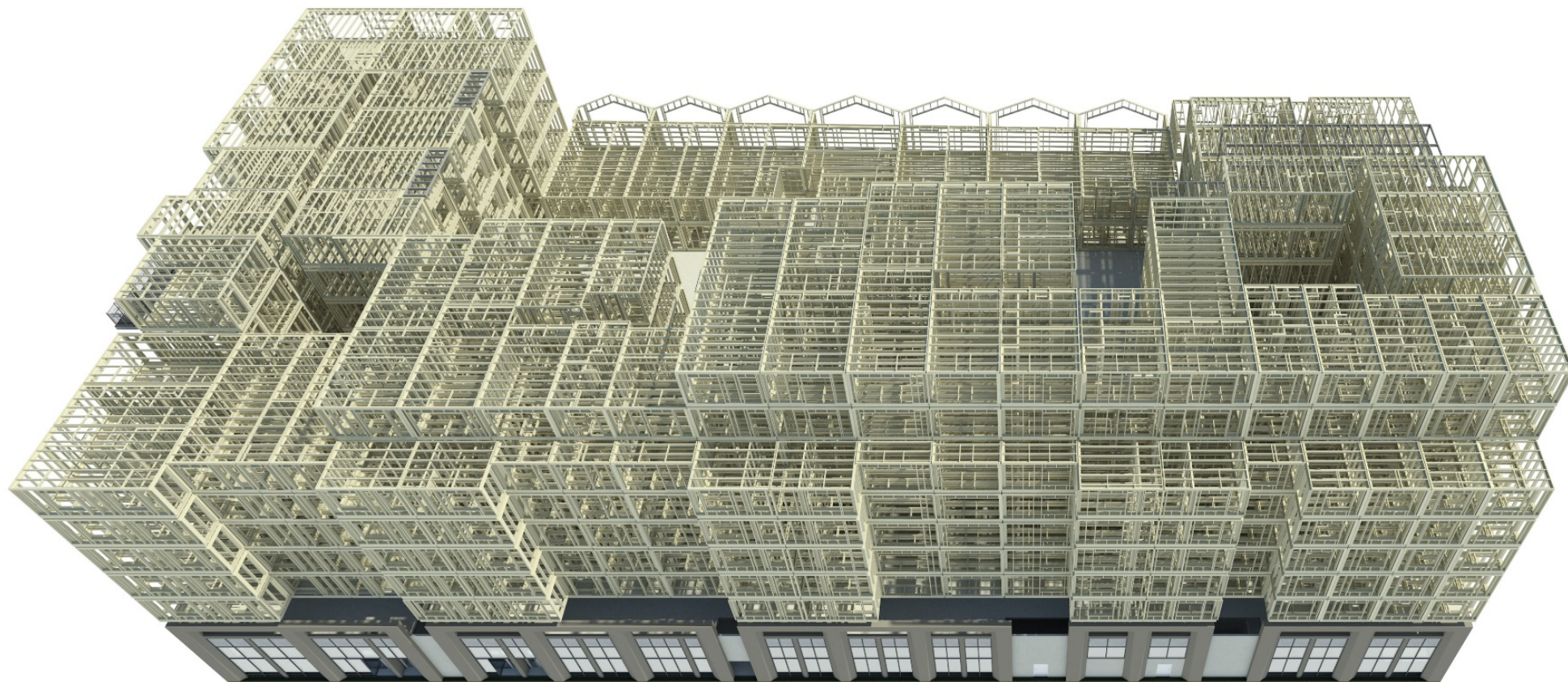


Butterfly table

Design Software



Design model



Looking forward doing business with You!

